

THERMOGAL 25 mm

- Excellent for low-pitch, lean-to roofs and large-span roofing projects.
- Extra-effective thermal insulation is a cost-saving advantage for closed structures such as conservatories, transport stations, public areas and swimming pool enclosures.
- Thermal insulation especially effective for cold climates and winter nights. Creates greenhouse effect to keep heat inside the structure.
- Optional Primalite coatings reflect away near infrared heat to prevent unwanted heat build-up during the day.
- Complementary Polygal glazing systems feature Aluminium and Polycarbonate profiles and accessories for problem-free, integrated roofing solutions.



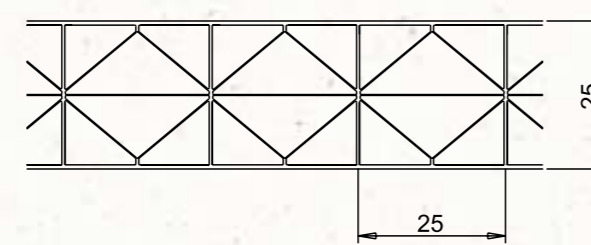
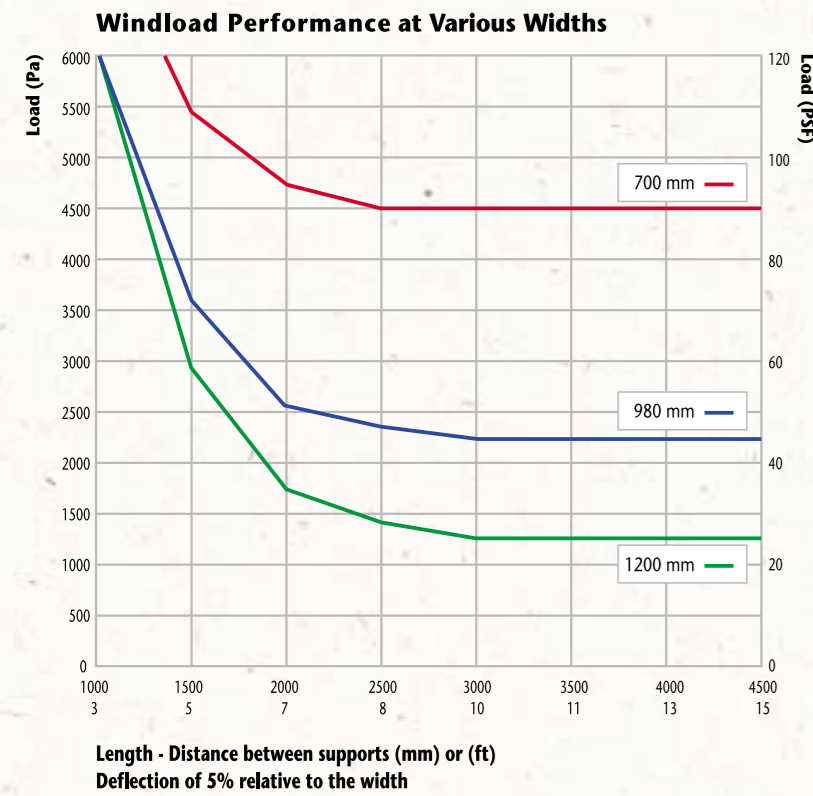
THERMOGAL 32 mm

- Excellent for low-pitch, lean-to roofs and large-span roofing projects.
- Extra-effective thermal insulation is a cost-saving advantage for closed structures such as conservatories, transport stations, public areas and swimming pool enclosures.
- Thermal insulation especially effective for cold climates and winter nights. Creates greenhouse effect to keep heat inside the structure.
- Optional Primalite and Silhouette coatings reflect away near infrared heat to prevent unwanted heat build-up during the day.
- Complementary Polygal glazing systems feature Aluminium and Polycarbonate profiles and accessories for problem-free, integrated roofing solutions.



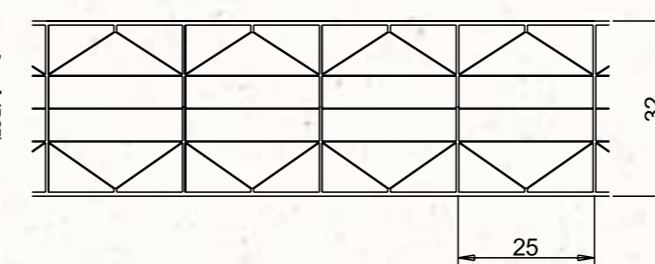
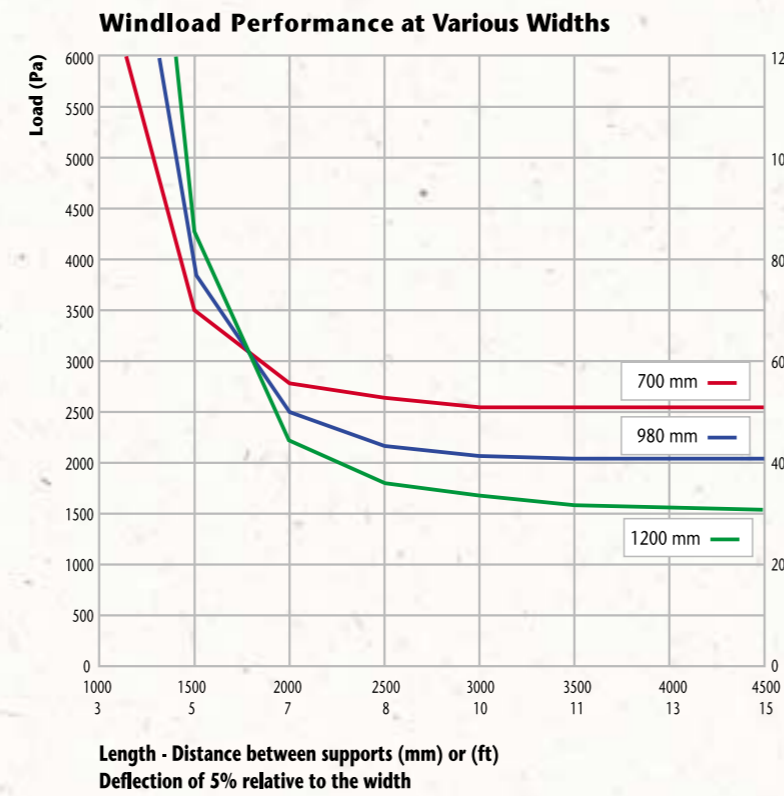
THERMOGAL 35 mm

- Excellent for low-pitch, lean-to roofs and large-span roofing projects.
- Thermogal 35 Maximum Thermal Coefficient (1.36 U Value) for extra-effective thermal insulation.
- Thermal insulation especially effective for cold climates and winter nights. Creates greenhouse effect to keep heat inside the structure.
- Optional Primalite and Silhouette coatings reflect away near infrared heat to prevent unwanted heat build-up during the day.
- Complementary Polygal glazing systems feature Aluminium and Polycarbonate profiles and accessories for problem-free, integrated roofing solutions.



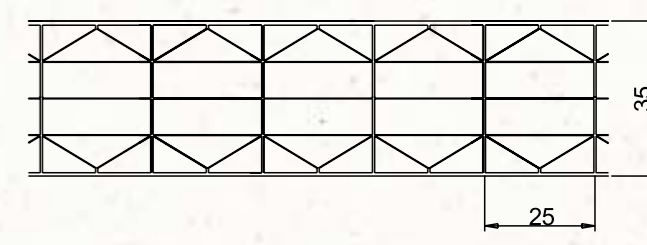
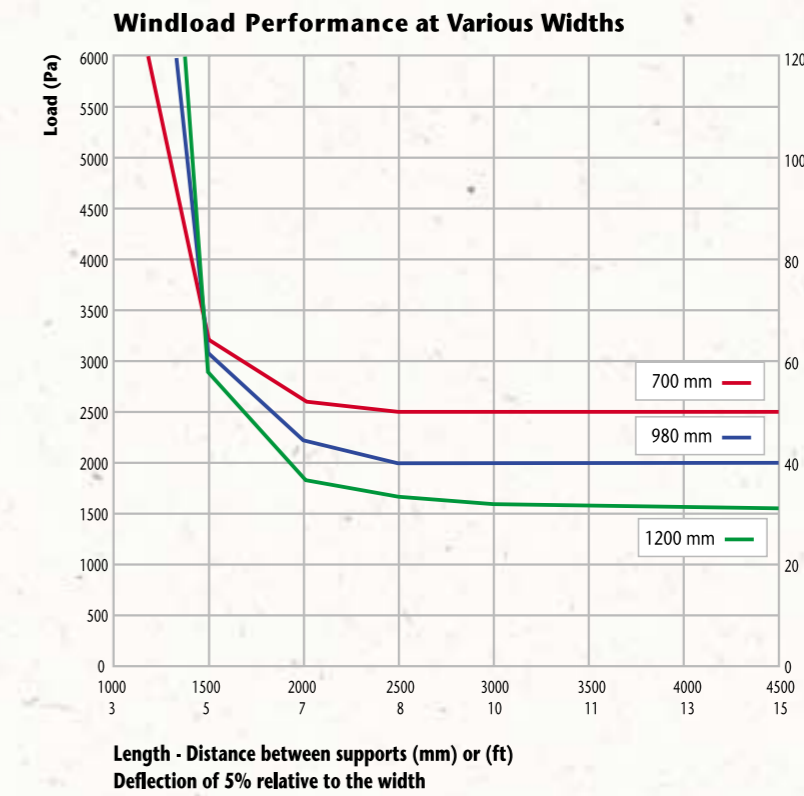
Technical Specifications

Color availability	Clear, Bronze, Ice
Weight (g/m ²)	3500 (0.72 lb/ft ²)
Sheet thickness	25 (0.984")
Minimum cold bending radius (m)	4.37 (14'9")
Standard widths (mm)	980, 1200, 2100 <i>new</i> (47.25")
Standard lengths (m)	3, 4, 6
U-factor (W/m ² ·°C) TNO tested	1.7 (0.31 Btu/h-ft ² ·°F)
Light transmission: (ASTM D-1494)	Clear 79% Bronze 20% Ice 54%
Thermal expansion (mm per m)	Ice Clear 2.5 (1/8" per 3') Bronze 3.25 (1/4" per 4')
Recommended minimum roof slope	10%
Impact resistance (joule) (ASTM D-5628)	2.98 (2.19 ft-lb)



Technical Specifications

Color availability	Clear, Bronze, Ice
Weight (g/m ²)	3800 (0.78 lb/ft ²)
Sheet thickness	32 (1.25")
Minimum cold bending radius (m)	5.6 (18.3')
Standard widths (mm)	980, 1200 (47.25")
Standard lengths (m)	3, 4, 6
U-factor (W/m ² ·°C) TNO tested	1.4 (0.25 Btu/h-ft ² ·°F)
Light transmission: (ASTM D-1494)	Clr 73% Opal 51% Brz 16% Silhouette Cold 43% Silhouette pearl 45%
Thermal expansion (mm per m)	Ice Clear 2.5 (1/8" per 3') Bronze 3.25 (1/4" per 4')
Recommended minimum roof slope	10%
Impact resistance (joule) (ASTM D-5628)	3.00 (2.20 ft-lb)



Technical Specifications

Color availability	Clear, Bronze, Ice
Weight (g/m ²)	4000 (0.82 lb/ft ²)
Sheet thickness	35 (1.37")
Minimum cold bending radius (m)	6.125 (20')
Standard widths (mm)	980, 1200 (47.25")
Standard lengths (m)	3, 4, 6
U-factor (W/m ² ·°C) TNO tested	1.36(0.24 Btu/h-ft ² ·°F)
Light transmission: (ASTM D-1494)	Clr 67% opal 47% Brz 14% Silhouette Cold 43% Silhouette pearl 45%
Thermal expansion (mm per m)	Ice Clear 2.5 (1/8" per 3') Bronze 3.25 (1/4" per 4')
Recommended minimum roof slope	10%
Impact resistance (joule) (ASTM D-5628)	3.00 (2.20 ft-lb)

Full Technical Information at:
www.polygal.com

Aluminium Profiles and Accessories Order List

Polygal Aluminium Profile	No.	Function	Glazing Thickness	Quantity
	314	Edge Profile	25mm	
	320	Edge Profile	32mm	
	321	Edge Profile	35mm	
	308	Cap Profile	6-35mm	
	309	Spacer Profile	25-35mm	
	310	Purlin Profile	6-35mm	
	306	Pressure Profile	6-35mm	
	307	Base Profile	6-35mm	
	323	Box Profile	6-35mm	

Polygal Accessories	No.	Quantity
	428	
	429	
	502	
	503	
	504	

Standard length of Profile - 6m. For different lengths please contact your nearest Polygal office. Profile dimensions may be changed by Polygal without prior notice.

Complementary Glazing Systems from Polygal

Profiles and Accessory Details

Polygal's profiles and accessories are easy to install and ensure perfectly sealed, highly aesthetic glazed surfaces.

- Edge detail using U-Profile for side trimming. U-Profiles are available for all Thermogal thicknesses.
- Flat-base-Profile specially designed for easy bending on-site in arched applications.
- Box-Profile provides better moment of inertia. Features space for inserting steel profile for reinforcement and special joint details.
- Purlin-Profile prevents air from permeating into the sheets, while helping collect and drain condensation droplets through the Base-Profile. Purlin-Profile also supports positive wind-load.

Polygal's Technical Support Services

Polygal's Technical Support Department invites architects and designers to send them their technical questions and sketches of projects. The Department's in-house architects and designers will prepare AutoCAD drawings illustrating optimal mechanical and energy-saving design suggestions.

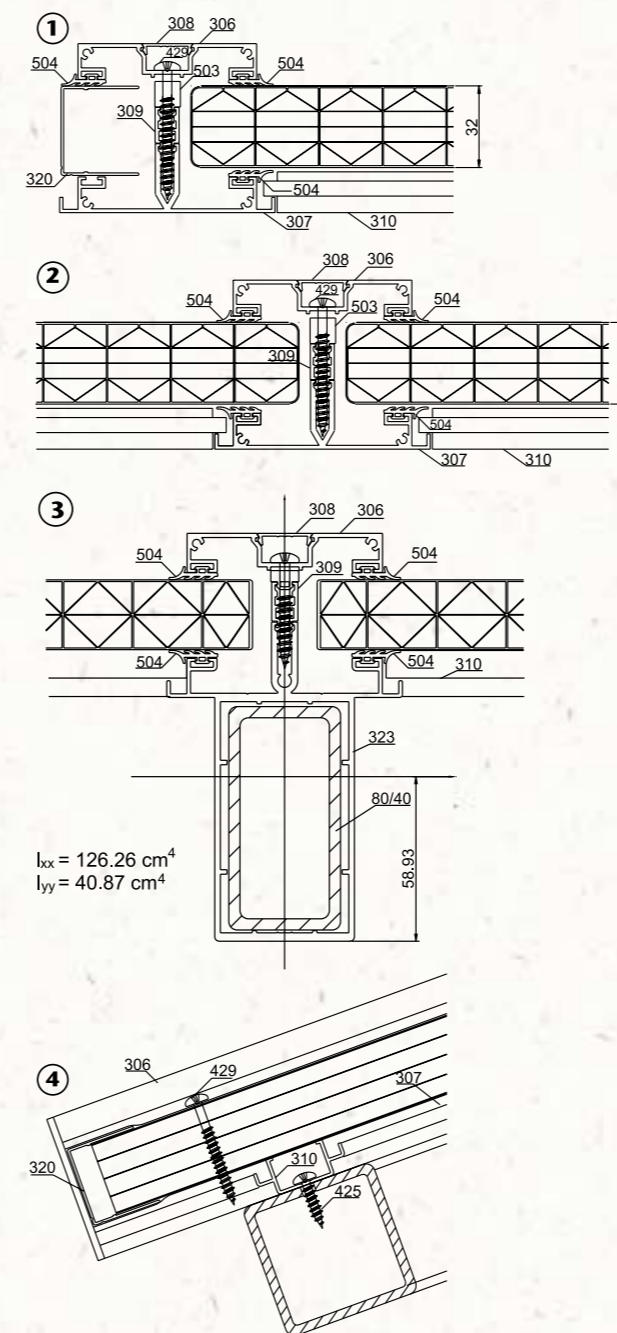
In addition, four technical support software programs were developed by Polygal to assist architects and engineers in project planning using Polygal Sheets

PolygalCAD
Computerized library featuring Polygal sheet and profile details for incorporating into AutoCAD designs.

Arches and Purlins
Helps Civil Engineers calculate engineering parameters including deflections, distance between supports and sheet sizes for different wind and snow loads.

Frame
Helps Civil Engineers calculate parameters for pitched roofs and windows, arched roofs and purlin supports.

PolSel
Helps calculate optimal positioning of Selectogal sheets for maximum energy savings.



$I_{xx} = 126.26 \text{ cm}^4$
 $I_{yy} = 40.87 \text{ cm}^4$

YARKONI ADV. 1995/03
thermo3-07.2003-2



POLYGAL Plastics Industries Ltd.
Ramat Hashofet 19238
Israel
Tel: 972-4-959 6222
Fax: 972-4-959 6284
E-mail: sales@polygal.co.il
Web site: www.polygal.com



POLYGAL Inc.
P.O. Box 410592
Charlotte, NC 28241
USA
E-mail: usasales@polygal.com
Web site: www.polygal.com



Technical Support
Tel: 972-4-959 6220
Fax: 972-4-959 6235
E-mail: techsupport@polygal.com



The data in this advertisement are provided in good faith and constitute general information without commitment, and no warranty is given or implied. Polycarbonate is a combustible thermoplastic that complies with various international standards, as customary in each country. Avoid exposure to excessive heat or aromatic cleaning solvents. Normal fire precautions should be taken to protect against combustion.



THERMOGAL 25/32/35 mm
POLYGAL®

THERMOGAL
25 / 32 / 35 mm

Extra-strong, extra-rigid,
extra-effective insulation

Extremely low U-Value means effective thermal insulation for cold climates. Heat enters the house and stays there.

Saves on heating energy consumption and costs.

Sophisticated multi-layer sheet design. Extra strength for low pitch roofing

Optional reflective coatings (Primalite or Silhouette) for warm climates (by special order)

Bright, transparent look

Large range of colors and shades (subject to order quantity)

Ideally suited for diagonal cuttings

